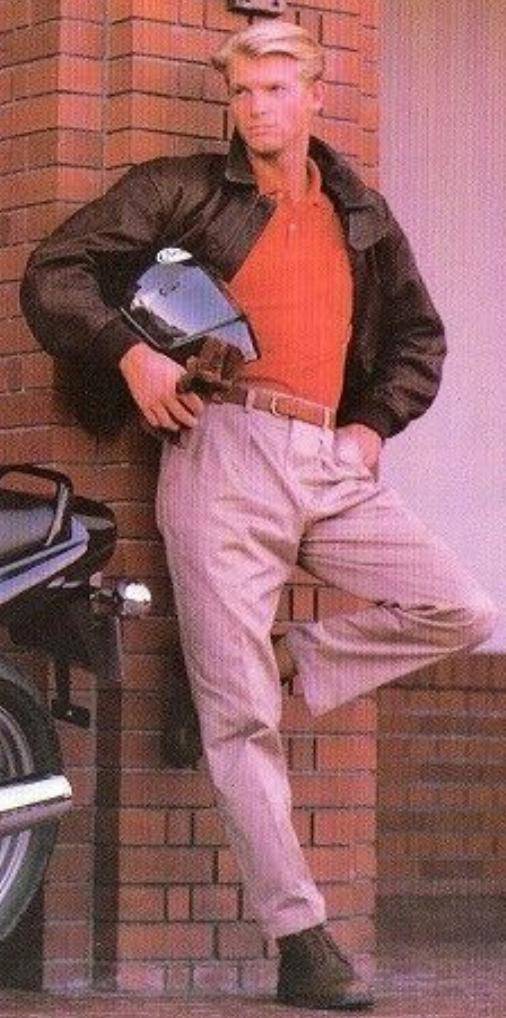


SUZUKI VX800



A Moden Classic

The Suzuki VX800, with its good looks and a booming, high-torque V-Twin engine, revives the fun of the traditional sporting roadster — and adds Suzuki technology and quality for the '90s. It combines the character and excitement of a shaft-driven V-Twin sportbike with a comfortable riding position and smooth handling to take you where you want to go, whenever you want to go.

VX800



BODY COLOR: BLACK



805cc V-twin engine



Rear shock absorber with piggy reservoir



Instrument panel

- V-Twin 805cc engine packs a high torque, while its crankshaft configuration reduces vibration for smooth power delivery.
- Two-into-two exhaust system with reverse-lapper mufflers produces a rich, mellow exhaust note.
- Shaft-drive system requires less maintenance and eliminates chain lube splattering.
- Microcomputer-controlled digital ignition system provides ideal timing, unaffected by heat or humidity.
- The adult riding position, combined with a thick-cushioned one-piece seat, provides comfort for both rider and pillion with its careful ergonomic engineering.
- Slim frame design of the VX800 enhances its classic lines and makes maneuvering easier. Provision of five engine mounting points increases

rigidity; the reinforced tail section is well-suited for saddlebags and carrier-rack loads.

- Front forks feature 41mm stanchion tubes and a full 150mm of wheel travel.
- Conventionally mounted rear shock absorbers with piggyback reservoir have spring preload and compression and rebound damping adjustments.
- Both the 310mm front disc brake with staggered-size twin-piston caliper and the rear 250mm disc brake with opposed-piston caliper have sintered-metal pads. Front brake lever features an easy-to-use 4-position adjustment system.
- Light and rigid aluminum-alloy, five-spoke wheels with hollow spokes carry front 18-inch Metzeler ME33 and rear 17-inch Metzeler ME55A tires.



SPECIFICATIONS

Engine type	SOHC, 4-stroke, TSCC, V-2 cylinders, water-cooled, 8 valves	Wheelbase	1,555mm (61.2 in.)
Piston displacement	805cc	Ground clearance	145mm (5.7 in.)
Bore x stroke	83mm x 74.6mm	Dry mass	213kg (470 lbs.)
Compression ratio	10.0 : 1	Suspension front	Telescopic
Maximum power	63.0ps/6,500rpm	rear	Coil spring, gas/oil damped, spring preload
Maximum torque	7.51kg-m/5,500rpm		5-way rebound damping 4-way and compression damping 4-way adjustable
Carburetor	Mikuni BDS36 and BDS6	Brakes front	Disc
Ignition type	Fully transistorized	rear	Disc
Starter system	Electric starter	Tires front	110/80-18
Transmission	5-speed constant mesh	rear	150/708-17
Final drive	Shaft drive	Fuel tank	19.0L (5.0 gal.)
Overall length	2,255mm (88.8 in.)	Body colors	Red, Black, Silver
Overall width	805mm (31.7 in.)		
Overall height	1,085mm (42.7 in.)		
Seat height	795mm (31.3 in.)		

RED



SILVER



*SUZUKI MOTOR CO., LTD. reserves the right to change, without notice, equipment, specifications, colors, materials and other items to apply to local conditions. Each model might be discontinued without notice. Please inquire at your local dealer for details of any such changes. Actual body colors might differ slightly from the colors in this brochure.

• Always wear a helmet, eye protection, and protective clothing • Read your owners manual carefully • Enjoy riding safely

SUZUKI

Heron Suzuki Plc,
Gatwick Road, Crawley,
West Sussex RH10 2XF
Tel: (0293) 518000